

Test Data Manager (TDM) Health Check

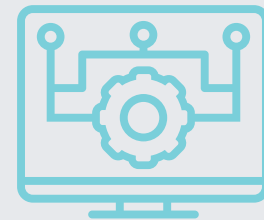
Ensure your software is optimized for success with our Health Check Services.

Phase 1 Assessment



- Installation & Environments Check
 - Install of TDM Components and Environment
 - Review Structure of the Working Database (Repository)
- Administration & Usage
 - Assess User and Use Case Data

Phase 2 Recommendation



- Review Best Practices:
 - Profiles, Environments, Data Models and Data Relationships
 - Discovering Test Data (Profiling)
 - Creating Subset Data for Testing
 - Masking Data for Testing
 - Generating Synthetic Data to Fill In Test Data Coverage Gaps
- Deliver Recommendations Docs

TDM Components

Core Health Check Includes:

Test Data Manager

Optional Add-On:

Agile Requirements Designer (ARD)

